

Specifications

Structure: LX-Curved-Series

Roof: thermo system

Walls: glass panels / sliding doors

Structure width: 30.00m

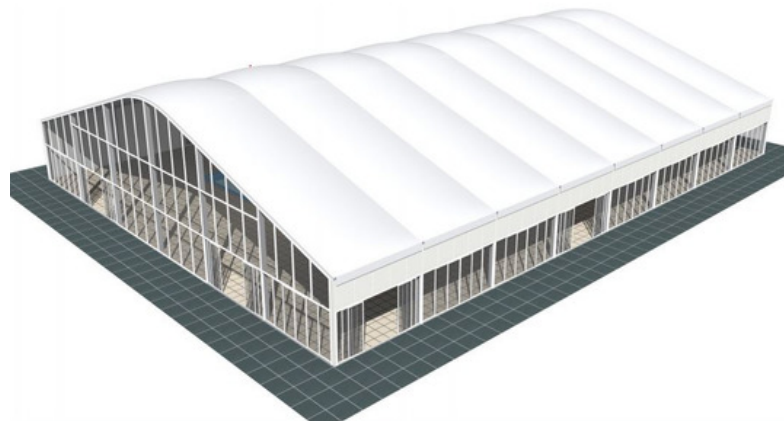
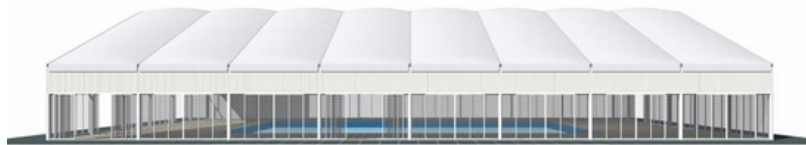
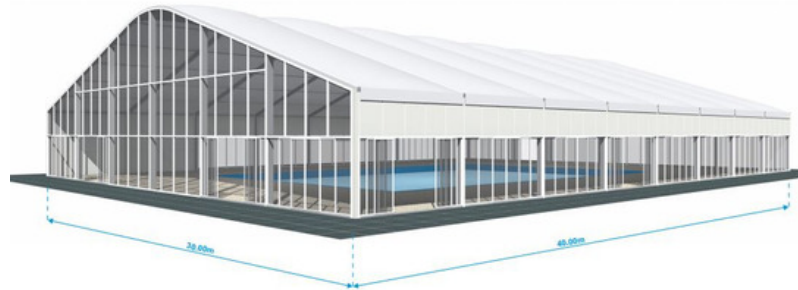
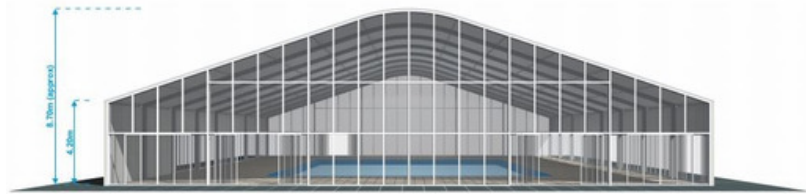
Structure length: 40.0m

Bay width: 5.00m

Aluminium type: European - Hard Pressed
Extruded Structural Aluminium

Connecting components: CE Certified - hot
dipped, structural grade corrosive resistant
galvanised steel

Roof covering type: Highly durable
industrial grade, high gloss white, PVC
coated polyester fabric - UV resistant and
flame retardant according to: DIN 4102 B1,
M2; BS 5438-7837; USA NFPA701



ACCESSORIES

